

**521  
Fifth**



**SPACE FOR WORK**

[521FIFTHAVENUE.COM](http://521FIFTHAVENUE.COM)

# LOBBY TRANSFORMATION



**A lobby that focuses on anticipating your guests. A coffee bar that gives you a recharge. A gym experience that's always at your fingertips. At 521 Fifth, we've carefully crafted spaces that you can make your own, whenever and however you want. New lobby turnstiles will be installed to accommodate touchless entry and preauthorized guest registration.**

# THE NEIGHBORHOOD



Just steps away from Grand Central and Bryant Park, 521 5th Ave. sits at the intersection of New York City commerce and culture. The hustle and bustle along this midtown corridor reflects the city's endless energy and diversity, providing inspiration to a new way of working.



Building Exterior



Entrance



Lobby



Coffee Bar



24th Floor Terrace

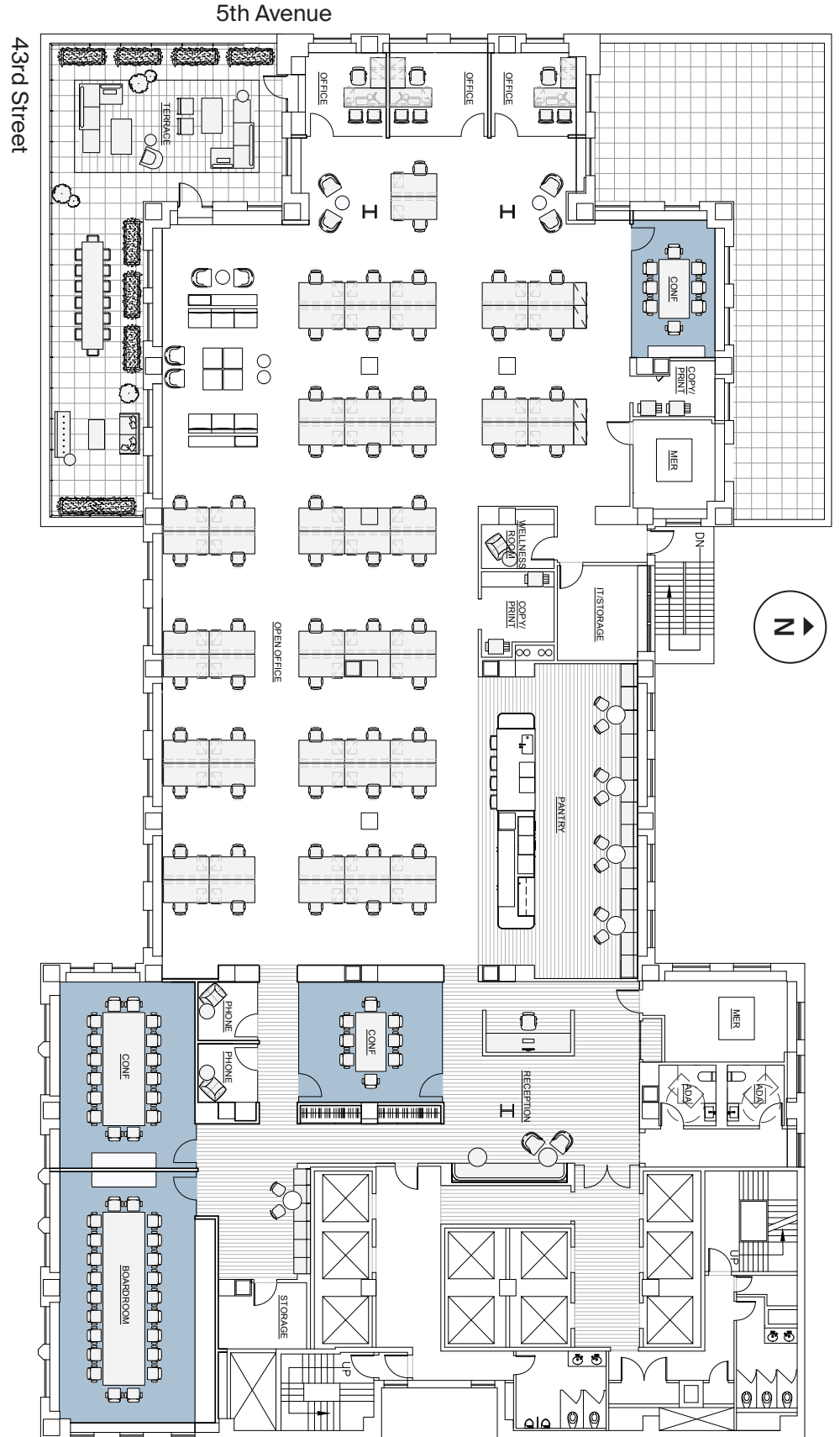


24th Floor Open Office

# 14TH FLOOR

NEWLY  
CONSTRUCTED  
PREBUILT  
17,796 RSF

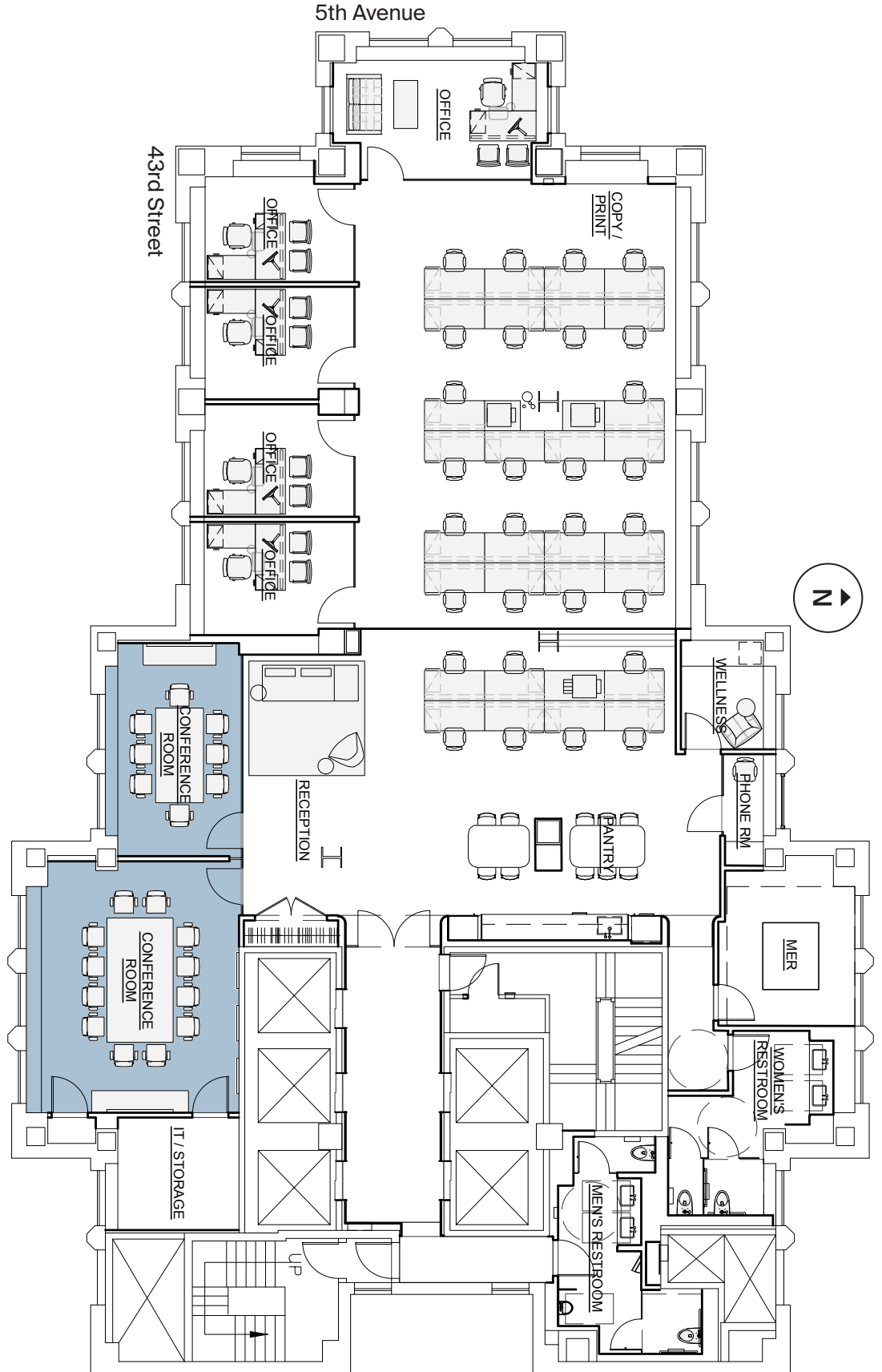
Workstations	60
Headcount	64
● Conference room	3
● Boardroom	1



# 34TH FLOOR

NEWLY  
CONSTRUCTED  
PREBUILT  
6,698 RSF

Workstations	29
Headcount	35
● Conference room	2





# WELLNESS UPGRADES



## BUILDING

MERV-13 filters have been installed in all base building air handlers to enhance filtration efficiency and eliminate lower micron particles while maintaining acceptable airflow

Frequent disinfection of lobby common areas and high touchpoint surfaces



## LOBBY

New lobby turnstiles will be installed to accommodate touchless entry and preauthorized guest registration

Bipolar Ionization technology installed in ductwork to deactivate viruses and bacteria



## RESTROOMS

New automatic faucets and soap dispensers will be installed

Antimicrobial Coatings and door hardware will be installed

Touchless hardware including foot pulls and antimicrobial kick/push plates and push bars will replace standard door handles and keypad locks



## PREBUILTS

Architects have studied circulation paths, egress, conference room and office sizes, and overall programs for prebuilts to minimize occupant contact and maximize personal space

New automatic faucets and soap dispensers will be installed at prebuilt pantries

Bipolar Ionization technology will be introduced to supply ductwork for the AC units in order to deactivate viruses and bacteria

# 521 Fifth



## Peter Turchin

Vice Chairman  
peter.turchin@cbre.com  
T 212 984 8364

## David Hollander

Vice Chairman  
david.hollander@cbre.com  
T 212 984 6553  
C 917 846 3853

## Tim Freyberg

Vice President  
tim.freyberg@cbre.com  
T 212 984 8136  
C 917 856 7584

## Benjamin Joseph

Vice President  
benjamin.joseph@cbre.com  
T 212 984 8206  
C 352 359 9034